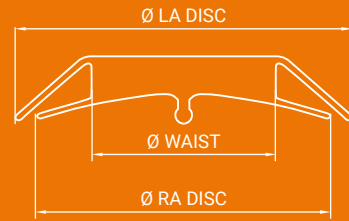
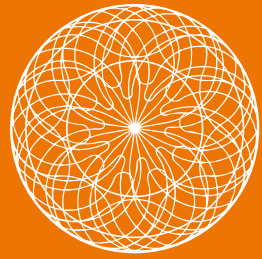


# Occlutech ASD Occluder

Product specifications

ASD



| Article No. | Defect Size [mm] | Ø Waist [mm] | Ø LA Disc [mm] | Ø RA Disc [mm] | Sheath Size* [F] | Pusher Article No. (color)** |                |
|-------------|------------------|--------------|----------------|----------------|------------------|------------------------------|----------------|
|             |                  |              |                |                |                  | Pistol Pusher                | Flex Pusher II |
| 29ASD04     | D≤4              | 4            | 11             | 9              | 7                | 55PP090 ●                    | 51FP060 ●      |
| 29ASD05     | 4<D≤5            | 5            | 14             | 11             | 7                | 55PP090 ●                    | 51FP060 ●      |
| 29ASD06     | 5<D≤6            | 6            | 16.5           | 12.5           | 7                | 55PP125 ●                    | 51FP100 ●      |
| 29ASD07     | 6<D≤7.5          | 7.5          | 18             | 14             | 7                | 55PP125 ●                    | 51FP100 ●      |
| 29ASD09     | 7.5<D≤9          | 9            | 20.5           | 16.5           | 7                | 55PP125 ●                    | 51FP100 ●      |
| 29ASD10     | 9<D≤10.5         | 10.5         | 22             | 18             | 7                | 55PP125 ●                    | 51FP100 ●      |
| 29ASD12     | 10.5<D≤12        | 12           | 27             | 23             | 9                | 55PP165 ●                    | 51FP120 ●      |
| 29ASD13     | 12<D≤13.5        | 13.5         | 28.5           | 24.5           | 9                | 55PP165 ●                    | 51FP120 ●      |
| 29ASD15     | 12<D≤15          | 15           | 30             | 26             | 9                | 55PP165 ●                    | 51FP120 ●      |
| 29ASD16     | 15<D≤16.5        | 16.5         | 31.5           | 27.5           | 9                | 55PP165 ●                    | 51FP120 ●      |
| 29ASD18     | 15<D≤18          | 18           | 33             | 29             | 9                | 55PP165 ●                    | 51FP120 ●      |
| 29ASD19     | 16.5<D≤19.5      | 19.5         | 34.5           | 30.5           | 10               | 55PP165 ●                    | 51FP120 ●      |
| 29ASD21     | 18<D≤21          | 21           | 36             | 32             | 11               | 55PP185 ●                    | 51FP150 ●      |
| 29ASD24     | 21<D≤24          | 24           | 39             | 35             | 11               | 55PP185 ●                    | 51FP150 ●      |
| 29ASD27     | 24<D≤27          | 27           | 42             | 38             | 12               | 55PP210 ●                    | 51FP160 ●      |
| 29ASD30     | 27<D≤30          | 30           | 45             | 41             | 12               | 55PP210 ●                    | 51FP160 ●      |
| 29ASD33     | 30<D≤33          | 33           | 48             | 43             | 12               | 55PP210 ●                    | 51FP160 ●      |
| 29ASD36     | 33<D≤36          | 36           | 52             | 46             | 12               | 55PP210 ●                    | 51FP160 ●      |
| 29ASD39     | 36<D≤39          | 39           | 54             | 49             | 12               | 55PP210 ●                    | 51FP160 ●      |
| 29ASD40     | 39<D≤40          | 40           | 55             | 50             | 12               | 55PP210 ●                    | 51FP160 ●      |

Availability subject to regulatory approval. Product data may be subject to change. Contact your Occlutech representative for information.

\* Occlutech Delivery Set (ODS).

\*\* Color defines Pusher color.

## Quality made in Europe

Occlutech adheres to the highest quality standards. We never compromise on quality. Our dedication to patients and the medical community is the main driver of our vision. We want to be at the forefront of developing technologies and products that matter, that make a difference and that help our customers to be at the leading edge of better treatment for structural heart disease.

### Content references:

1. Optimal septum alignment of the Figulla Flex occluder to the atrial septum in patients with secundum atrial septal defects.
2. Castleman LS et. al. Biocompatibility of Nitinol Alloy as an Implant Material. *Journal of Biomedical Materials Research* | 97 6:10:695.
3. Electrochemical Characterization of Nitinol Occluder, Natural and Medical Sciences Institute at the University of Tübingen, mNI<0,014 µg/(cm\*d).
4. Early single clinical experience with the new Figulla ASD Occluder for transcatheter closure of atrial septal defect in adults.
5. Haas NA et.al. Closure of Secundum Atrial Septal Defects by Using the Occlutech Occluder Devices in More Than 1300 Patients: The IRFACODE Project: A Retrospective Case Series.
6. Comparison of the Occlutech ® Figulla ® septal occluder and Amplatzer ® septal occluder for atrial septal defect device closure.



Occlutech International AB  
Landskronavägen 2, SE-252 32 Helsingborg, Sweden  
order@occlutech.com, [www.occlutech.com](http://www.occlutech.com)



## Perfecting Performance



## Occlutech ASD Occluder



ASD



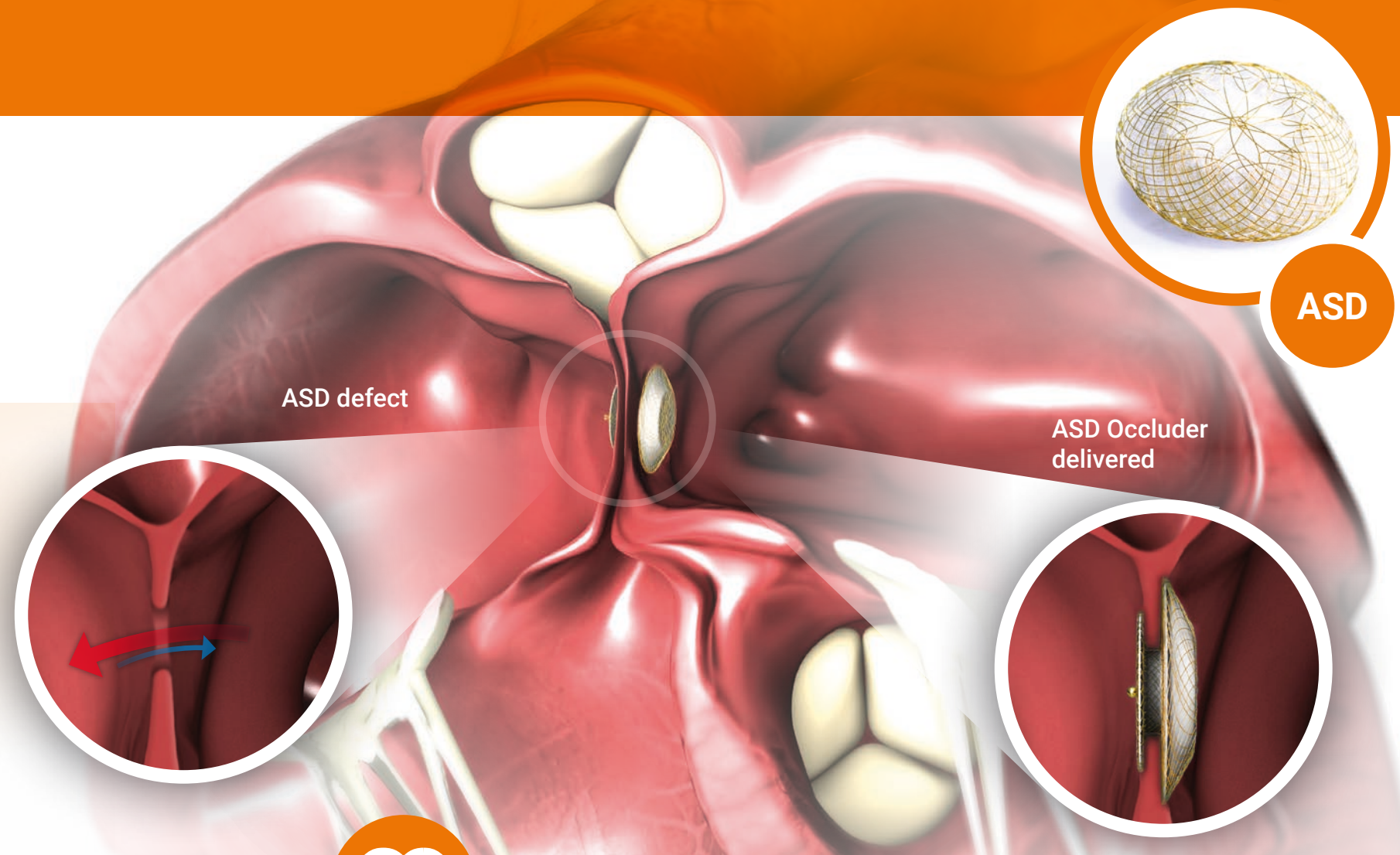
## Designed for safety and excellence



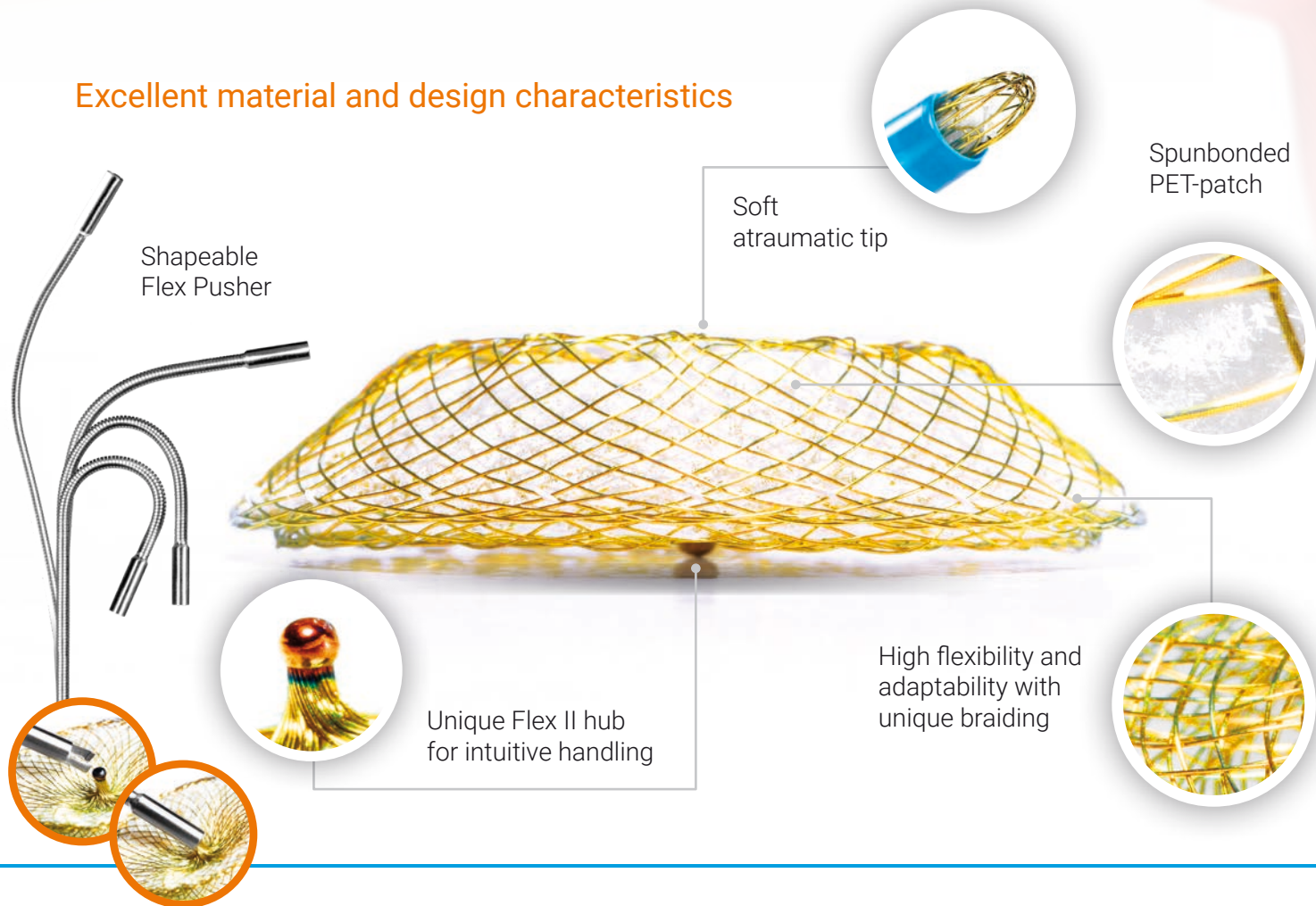
### PRODUCT FEATURES

The design of the Flex II ASD Occluder results in an ideal septum alignment which increases its feasibility and patient safety during implantation.<sup>1</sup>

- Optimized braiding pattern and less material at left atrial disc.
- Titanium oxide-covered Nitinol shows the best values of biocompatibility<sup>2</sup> and minimum Nickel release.<sup>3</sup>
- Spunbonded PET-patch allows for fast endothelialization.
- The unique ball-connection between pusher and Occluder safely locks it, while it freely follows the anatomy. Once in place it is easy and fast to deliver.



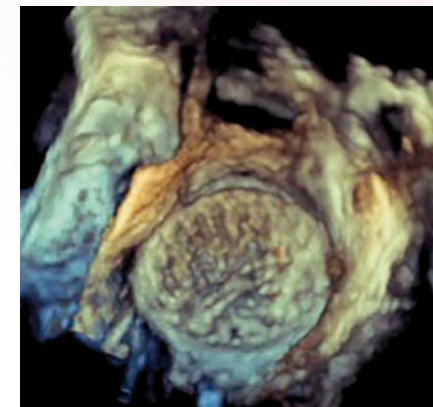
### Excellent material and design characteristics



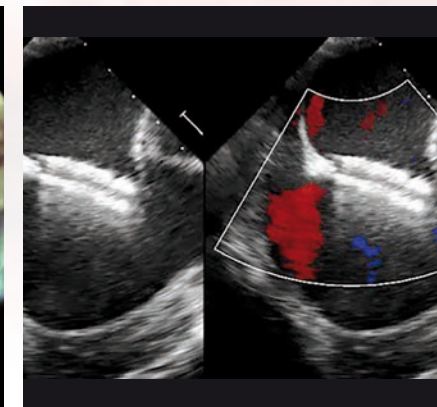
### CLINICAL BENEFITS

Recent studies found that transcatheter closure of isolated secundum atrial septal defects using the novel design of the Occlutech ASD Occluder was safe, effective and had an excellent outcome during the 6 months follow-up period.<sup>4,5</sup>

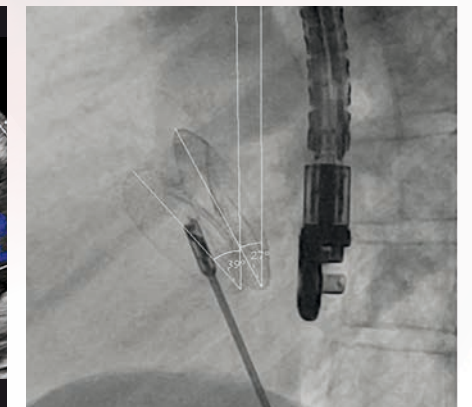
- Lower pull in forces and improved delivery sheath compatibility.
- Reduced material exposure.
- Significantly reduced mean procedure and fluoroscopic time compared to other devices (34%).<sup>6</sup>



3D TEE image of an implanted Occlutech ASD Occluder.



Perfect alignment of the Occluder to the Septum.



50° angulation of Flex Pusher vs Occluder hub.